

CHAMPERE

企业简介

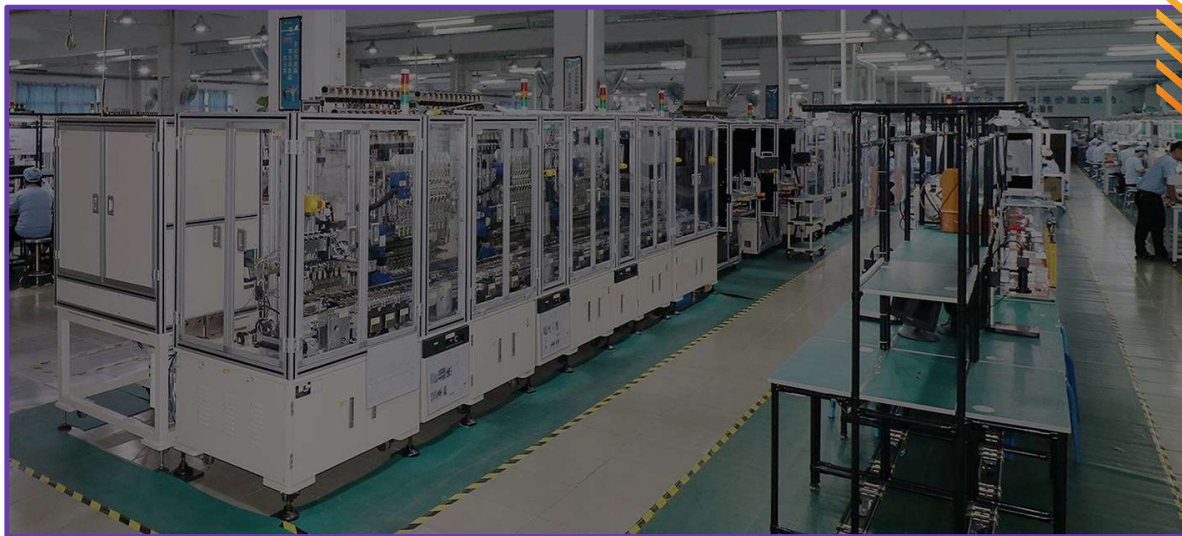
COMPANY INTRODUCTION

专业电子元器件制造商

PROFESSIONAL ELECTRONIC COMPONENTS MANUFACTURER

BY: TERRY

VER: 23.1.0



CHAMPERE.COM



CHAMPERE



CONTENTS

目录

01

HISTORY
发展历程

02

MAIN MARKET
主要市场

03

**PRODUCTION
ABILITY**
生产能力

04

CERTIFICATION
相关证书

CHAMPERE


PART

01

HISTORY

发 展 历 程





We focus on designing, developing and manufacturing electromagnetic relays, nonmechanical switches (known as MOS and TRAIIC relays). The products are widely used in household electrical appliances (air conditioning, fridge, TV, washing machine, air fryer, steamer, electric oven), power supply, industrial control, telecom devices, commercial systems, communication equipment, renewable energy equipment, HVAC, EV charger and automotive etc.

2004

FOUNDATION // // // // //

Founded in 2004 with 2 production lines which focus on OEM PCB power relays. With a steady growth both in revenue and product series.

2014

NEW PLANT // // // // //

Expanded our second plant with two series, 4 new products to suit changing market. Invest further USD 5Million on MOS Products.

2019

NEW ERA // // // // //

Involve new management team and new brand strategy to present ourselves in the market for quality, service and trust.

KEY PRODUCTS AND CAPACITY

KEY PRODUCTS

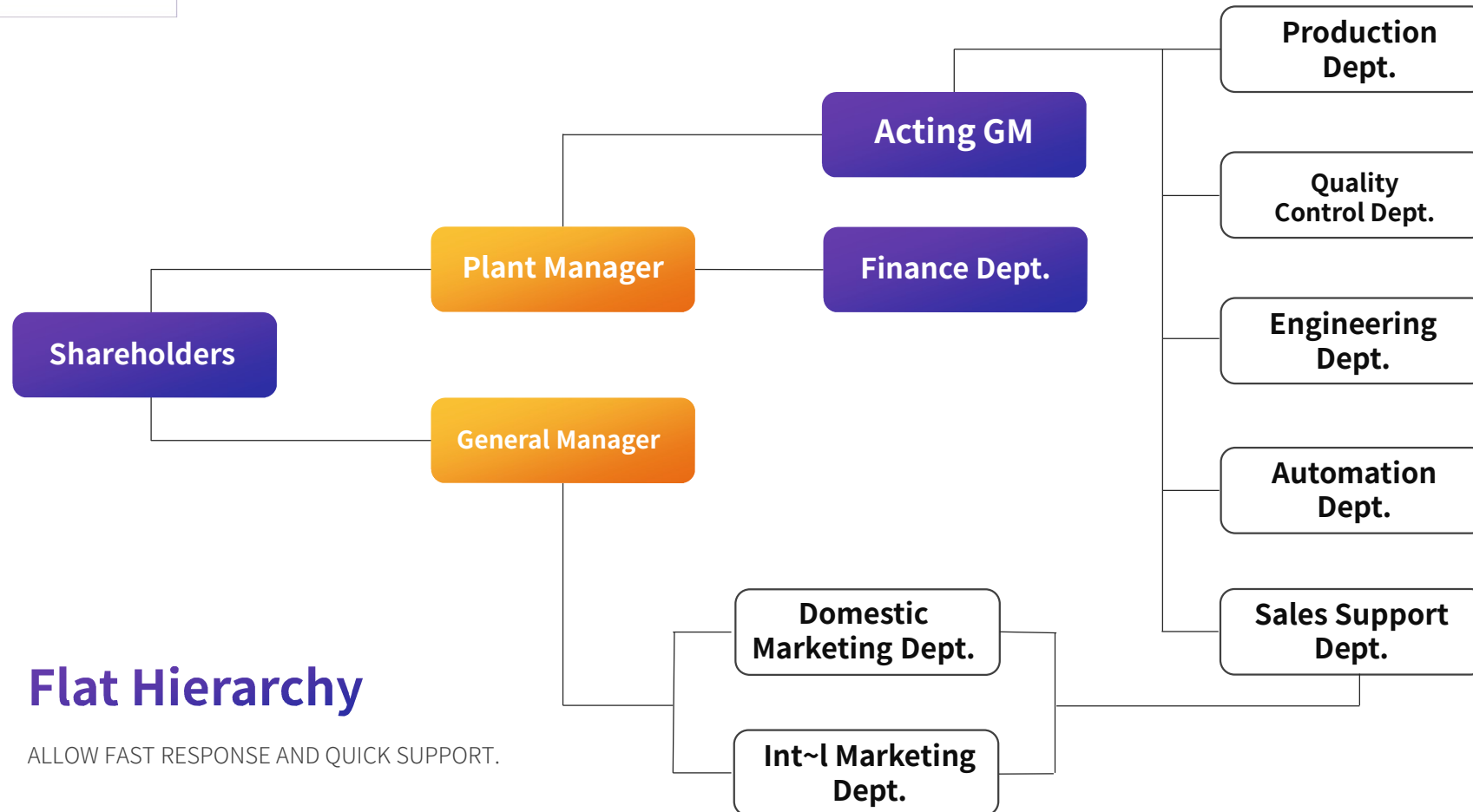
- POWER RELAY (TELECOM; GENERAL; INDUSTRIAL; LATCH; AUTOMOTIVE)
- PHOTO SOLID STATE RELAY (MOS OUTPUT; TRIC OUTPUT)
- HIGH VOLTAGE DC CONTACTOR; CUSTOMIZATION SERVICE

UL; TUV; CQC CERTIFIED

INVOLVE AUTOMATION LINE

CAPACITY

- POWER RELAY: 150 MILLION PCS/YR
- SOLIDSTATE RELAY: 50 MILLION PCS/YR
- CONTACTOR: 2 MILLION PCS YR



Flat Hierarchy

ALLOW FAST RESPONSE AND QUICK SUPPORT.

CHAMPERE

PART

02

MAIN MARKET

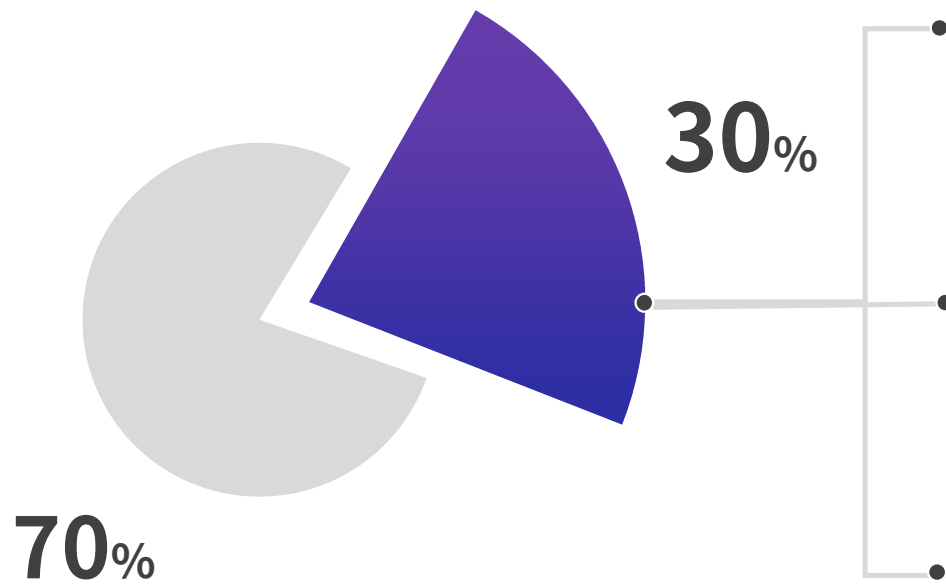
主 要 市 场



02

OUR MARKET

Share Chart



CHAMPERE



30% Oversea Sales

Fastest growing market for us in the recent years, because of our quality, service, complete range and price. Our products widely sold to East Asia, South Asia, Türkiye, South America, Russia and Europe.



70% Domestic Sales

We started as OEM factory for a few major brands in market, so our sales initially focused on domestic market. We work with many giant clients in the industry.



MOS and TRAIK Relay Sales Expect to be Doubled

New investment, new challenges, new opportunities, we expect this market to have a fast growth in the near future, products can be widely used in automotive, industrial control and new energy sectors.

DOMESTIC



HSM

Rinnai

EAT•N

VS

- | SMALL HOME APPLIANCE
- | KITCHEN APPLIANCE
- | SMART HOME IoT DEVICES
- | UPS & INVERTERS

WORLDWIDE



LG Smart TV



AMARA RAJA
Gotta be a better way

DAEWOO
ELECTRONICS

- | TVs
- | SMALL HOME APPLIANCE
- | AUTOMOTIVE AFTER MARKET
- | INDUSTRIAL CONTROL; UPS; HVAC

2021

55 Mil

Sales contribution all by power relay sector. Invest in new solid state relay production.

2022

75 Mil

New solid state relay start to build up volume, it becomes one of the future direction in our business model.

2023

80 Mil

Estimate to have a steady year and expect a boost in second half.

2025

Up 50%

Due to the new production line of solid state relay in place we hope to quickly build up the production and can increase at least 50% by 2025 comparing with 2023.

THANK YOU FOR YOUR ONGOING SUPPORT AND TRUST.

CHAMPERE

PART

03

PRODUCTION ABILITY

生 产 水 平 和 管 理 情 况





QUALITY POLICY

- PROCESS CONTROL
- ALL DEPT. PARTICIPATION
- CONTINUOUS IMPROVEMENT



QUALITY GOAL

- SATISFACTION RATE > 99%
- INTERNAL PPM < 20



OUR MISSION

Quality First,
Customer Paramount.



CORE VALUES

Equality and Mutual Relation,
Open, Considered, Client-
centric, Professional,
Sustainability.



IQC

IPQC

PHASE 1

SUPPLIER ~ SUPPLY PARTS

IPQC ~ FAA; RELIABILITY TEST

PHASE 2

IQC ~ INSPECTION PENDING

PRODUCTION ~ IN PRODUCTION CHECK

PHASE 3

IQC ~ INCOMING QUALITY CONTROL;

IPQC ~ PROCESS MONITORING

PHASE 4

IQC ~ RELIABILITY TEST; ROHS TEST

PRODUCTION ~ PRODUCE OR FURTHER
ANALYSIS REQUIRE TO IMPROVE

PHASE 5

WAREHOUSE ~ OK OR REJECT

OQC

R&D

PHASE 1

OQC ~ CHECK PARAMETERS AND PLATE

CLIENT ~ NEW REQUIREMENT

PHASE 2

WAREHOUSE ~ PRODUCTS PENDING
OUTGOING CHECK

R&D ~ CONFIRM DESIGN

PHASE 3

OQC ~ OUTGOING QUALITY CONTROL;

MOLD PRODUCTION (OUTSOURCE)

PHASE 4

WAREHOUSE ~ DISPATCH

MOLD RELIABILITY TEST

PHASE 5

QA ~ FEEDBACK COLLECTION &
ANALYSIS

TRAIL PRODUCTION AND MODIFICATION

CHAMPERE

PART

04

CERTIFICATION

企 业 证 书 和 荣 誉



**01**

AMERICAN

UL

COMPULSARY CERTIFICATION FOR CANADA AND AMERICA MARKET, WE OFFER UL WITH MORE THAN 80% OF OUR PRODUCTS

**02**

EUROPEAN

TUV

TUV IS ONE OF THE PREFERRED CERTIFICATION FOR EUROPEAN REGIONS, WE OFFER TUV WITH 70% OF OUR PRODUCTS

**03**

CHINESE

CQC

CQC IS GETTING MORE AND MORE RECOGNISED IN CHINA, WE OFFER THIS CERTIFICATION IN MORE THAN 50% OF OUR PRODUCTS.

ROHS 2.0



SGS

REACH

ROHS Complaint

100%

Average spent yearly on saving the earth

60w+

We Offer Only Environmental Friendly Products

We take environment into serious consideration these days, sustainability is a key topic, not only for us, but also for all people on this planet, we offer only ROHS complaint products unless otherwise specified. We also use recycled material for our packages.

CHAMPERE

COMPANY
INTRODUCTION

END

THANKS FOR WATCHING!

感谢您的观看和时间

VISIT US @ champere.com

